

**EAST  
END  
PRINTS**

Card  
Catalogue  
2018-2019





# WELCOME!



supporting emerging artists and illustrators onto print

From our creative studio in East London, EAST END PRINTS is pleased to bring you our beautiful collection of design led greetings cards. We are dedicated to staying ahead of the trends and finding the very best UK and international art and illustration talent for our curated collection. Visit our East London shop for beautiful high quality, graphic art prints, limited editions and greetings cards!



EAST END PRINTS director Helen Edwards has worked with hundreds of artists, licensed artworks internationally and published exclusive ranges for high street retailers. Helen and her team are passionate about bringing high quality, affordable art prints and cards to you!

See you soon!

Helen and the East End Prints team

## PRODUCTS

We use a high quality digital printing inks on 300gsm paper. All of our products are printed in the UK. Card size 17x12cm or 14x14cm. We select an envelope colour complimentary to the design and individually cello bagged.



## CONTACTS

[www.eastendprints.co.uk](http://www.eastendprints.co.uk)

[info@eastendprints.co.uk](mailto:info@eastendprints.co.uk)

T: 07985 440385 / 0207 428 1118

EAST END PRINTS Shop  
234 Brick Lane  
E2 7EB

## ORDERING

Delivery charged on orders under £100. Cards are sold in 6 per design. Delivery is 8-10 working days. International delivery – priced at time of order. 30 day payment terms.

# SOPHIE WARD

PAPER STOCK INVERCOTE 300GSM



SOPWAR001c



SOPWAR002c



SOPWAR003c



SOPWAR004c



SOPWAR005c



SOPWAR006c



SOPWAR007c



## SOPHIE WARD

Sophie, from South London, graduated with a BA in Fashion Illustration from the University for the Creative Arts, Epsom in 2008. Her work explores the existential anxiety felt by women today – from the masks we employ, to finding acceptance within – by taking traditionally feminine, bubblegum aesthetics and reclaiming them in her unique style.

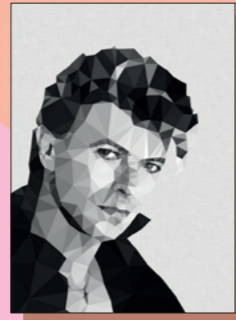




STUCOC055c



STUCOC057c



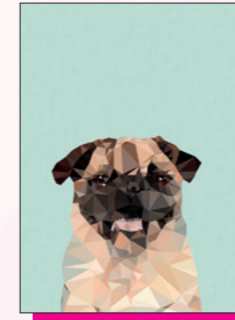
STUCOC020c



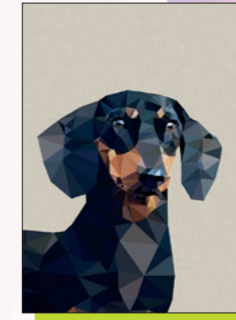
STUCOC043c



STUCOC010c



STUCOC025c



STUCOC007c



STUCOC036c



STUCOC045c



STUCOC058c



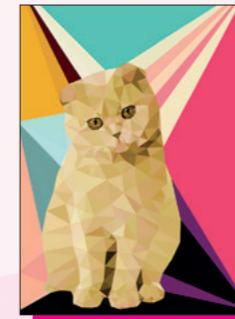
STUCOC059c



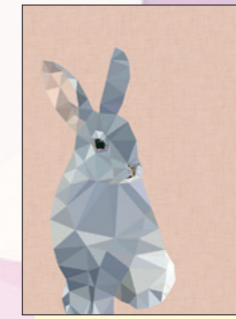
STUCOC047c



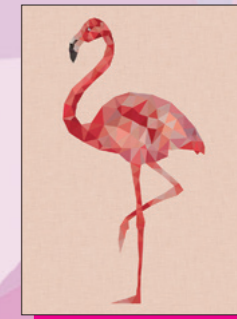
STUCOC002c



STUCOC038c



STUCOC026c



STUCOC008c



STUCOC013c



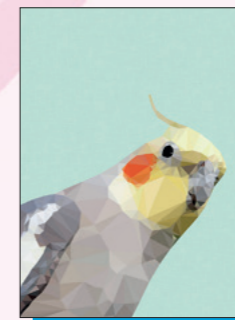
STUCOC014c



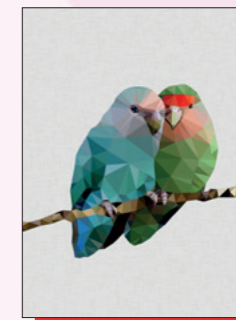
STUCOC031c



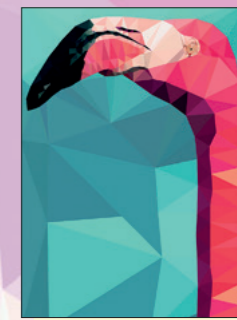
STUCOC017c



STUCOC006c



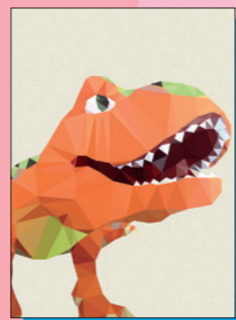
STUCOC040c



STUCOC009c



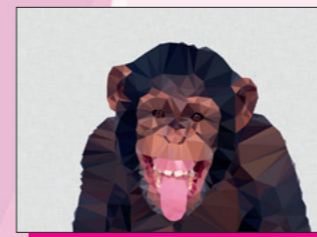
STUCOC028c



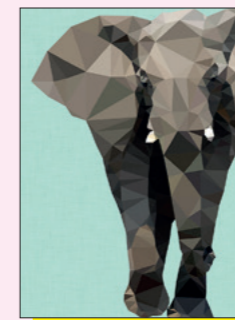
STUCOC035c



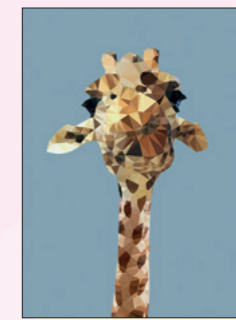
STUCOC044c



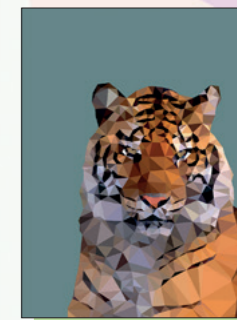
STUCOC039c



STUCOC022c



STUCOC048c



STUCOC027c



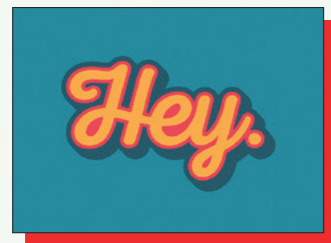
**STUDIO COCKATOO**

Studio Cockatoo is small design space nestled deep in the sunshine coast hinterland, where we husband and wife team Luke and Kate Bordessa are busy creating beautiful geometric and modern art to adorn your walls. All of our designs are created in house and our range is constantly growing and evolving. Trained in graphic design and both from creative backgrounds, Studio Cockatoo was born.





# WORD QUIRK



WORQUI001c

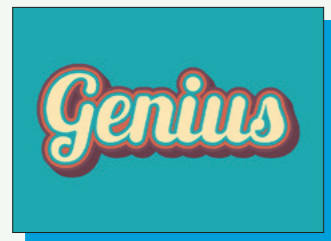


WORQUI002c

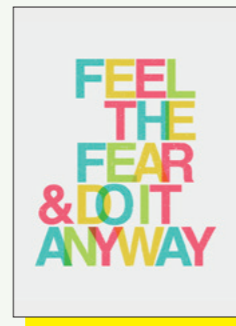


WORQUI003c

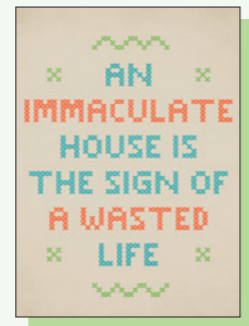
PAPER STOCK  
INVERCOTE  
300GSM



WORQUI004c



WORQUI005c



WORQUI006c



**WORD QUIRK**  
A collection of words and pictures portrayed with a slight sense of peculiarity.



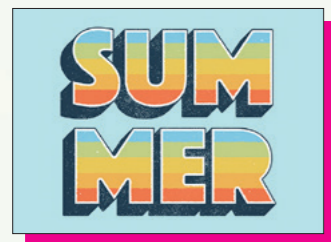
WORQUI007c



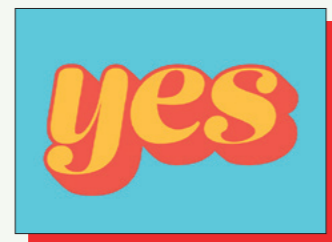
WORQUI008c



WORQUI009c



WORQUI010c



WORQUI011c



WORQUI012c

# REBECCA STRICKSON

PAPER STOCK  
INVERCOTE  
300GSM



REBSTR001c



REBSTR002c



REBSTR003c



REBSTR004c



REBSTR005c



REBSTR006c



REBSTR007c



REBSTR008c



REBSTR009c



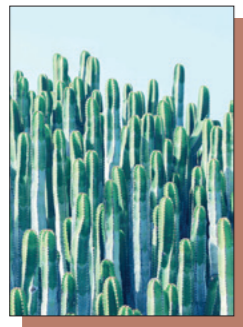
## REBECCA STRICKSON

Rebecca Strickson is a Peckham based Illustrator and do-er of things. Growing up in Lincolnshire, she then studied at Goldsmiths College before going freelance in 2009. Working solo and also with RSA Films, she has gained many clients with her bright, bold, energetic and forceful artwork which is all the better for her to get the point across. Influenced by nature, pattern, traditional crafts and weirdly atomic bombs, Rebecca's work is fun and fierce, strong and splendid.

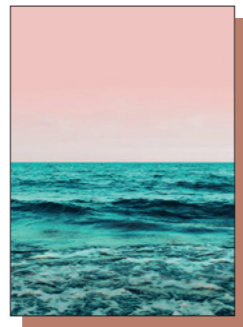


# 83 ORANGES

PAPER STOCK  
INVERCOTE  
300GSM



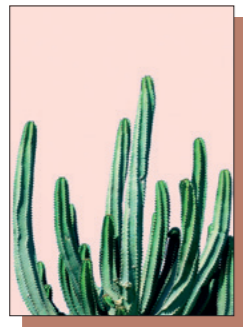
83ORANG002c



83ORANG018c



83ORANG010c



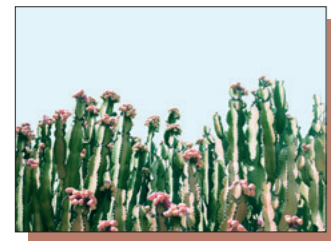
83ORANG015c



83ORANG014c



83ORANG012c



83ORANG024c



83ORANG025c



83ORANG027c

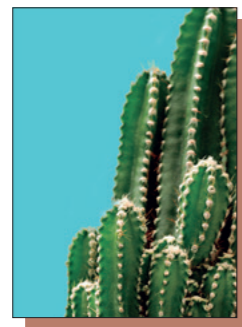


83ORANG029c

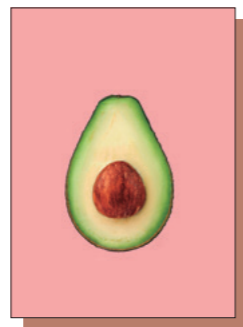
# RAFAEL FARIAS



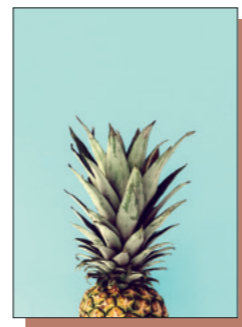
PRINTMA010c



PRINTMA012c



PRINTMA009c



PRINTMA017c

## RAFAEL FARIAS

My intention is to create minimalist art with cheerfulness and warmth. In this collection you can see some Scandinavian/monochromatic elements, but there are also lots of colours that I introduced to the mix.



## 83 ORANGES

I'm Uma. I run my own design studio called 83 Oranges where I design logos, websites & everything else creative for friends & clients.

# JAZZBERRY BLUE



JAZBLU013c



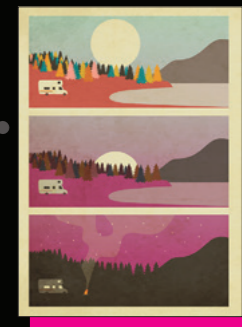
JAZBLU004c



JAZBLU030c



JAZBLU060c



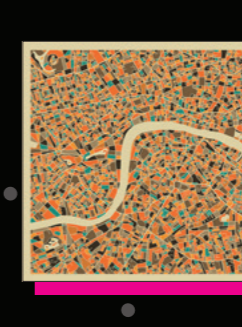
JAZBLU022c



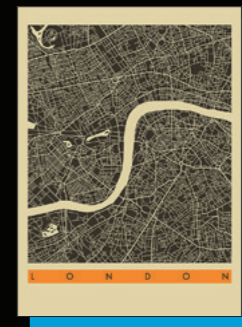
JAZBLU058c



JAZBLU046c



JAZBLU006c



JAZBLU007c



JAZBLU053c



JAZBLU025c

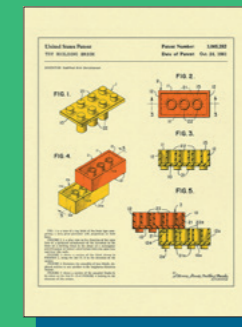


## JAZZBERRY BLUE

Jazzberry Blue is a self taught digital illustrator and painter, currently based in Toronto. He strives to expand his capabilities, adding to his portfolio on a daily basis. He considers design his main form of communication "It is a true honour to know that I am not just talking to myself." Coloured reproduction of a U.S. patent document by Jazzberry Blue.



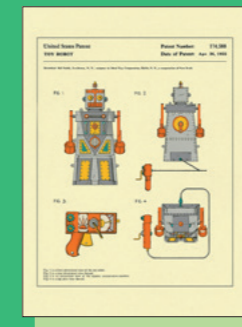
JAZBLU092c



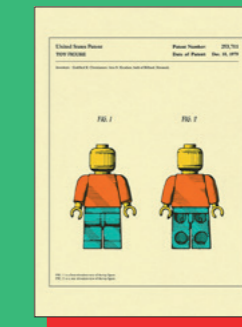
JAZBLU094c



JAZBLU101c



JAZBLU103c



JAZBLU105c



JAZBLU106c

PAPER STOCK  
INVERCOTE  
300GSM



INDIE PRINTS

INDIE PRINTS

PAPER STOCK  
INVERCOTE  
300GSM



INDPRI061c



INDPRI063c



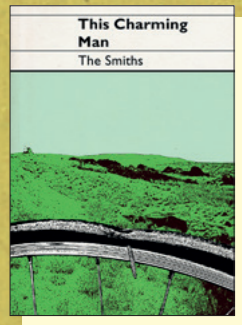
INDPRI082c



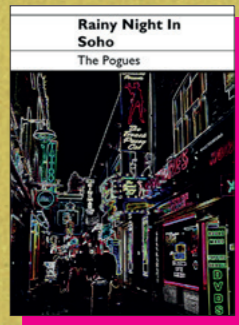
INDPRI083c



**INDIE PRINTS**  
Indie Prints is a London based artist with a clear passion for his surroundings and culture. Influenced by retro rock posters, typography and wall art, his work has an amazing vintage feel to it. He combines individual band's styles with typography, and creates stunning visuals for songs and their perceived meaning.



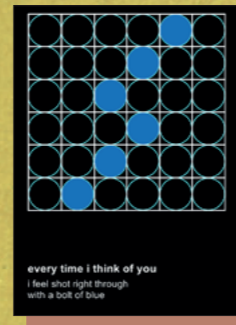
INDPRI033c



INDPRI029c



INDPRI076c



INDPRI024c



INDPRI025c



INDPRI062c



INDPRI099c



INDPRI098c



INDPRI032c



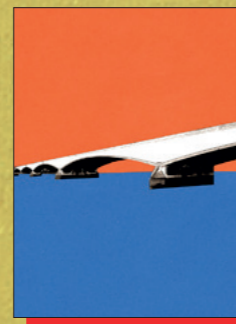
INDPRI060c



INDPRI043c



INDPRI049c



INDPRI054c



INDPRI044c



INDPRI095c



INDPRI040c



INDPRI096c



INDPRI094c





# ALICE BELVOIR



ALIBEL001c

ALIBEL002c

ALIBEL003c

ALIBEL004c

ALIBEL005c

ALIBEL006c

ALIBEL007c

ALIBEL008c

ALIBEL009c

ALIBEL010c



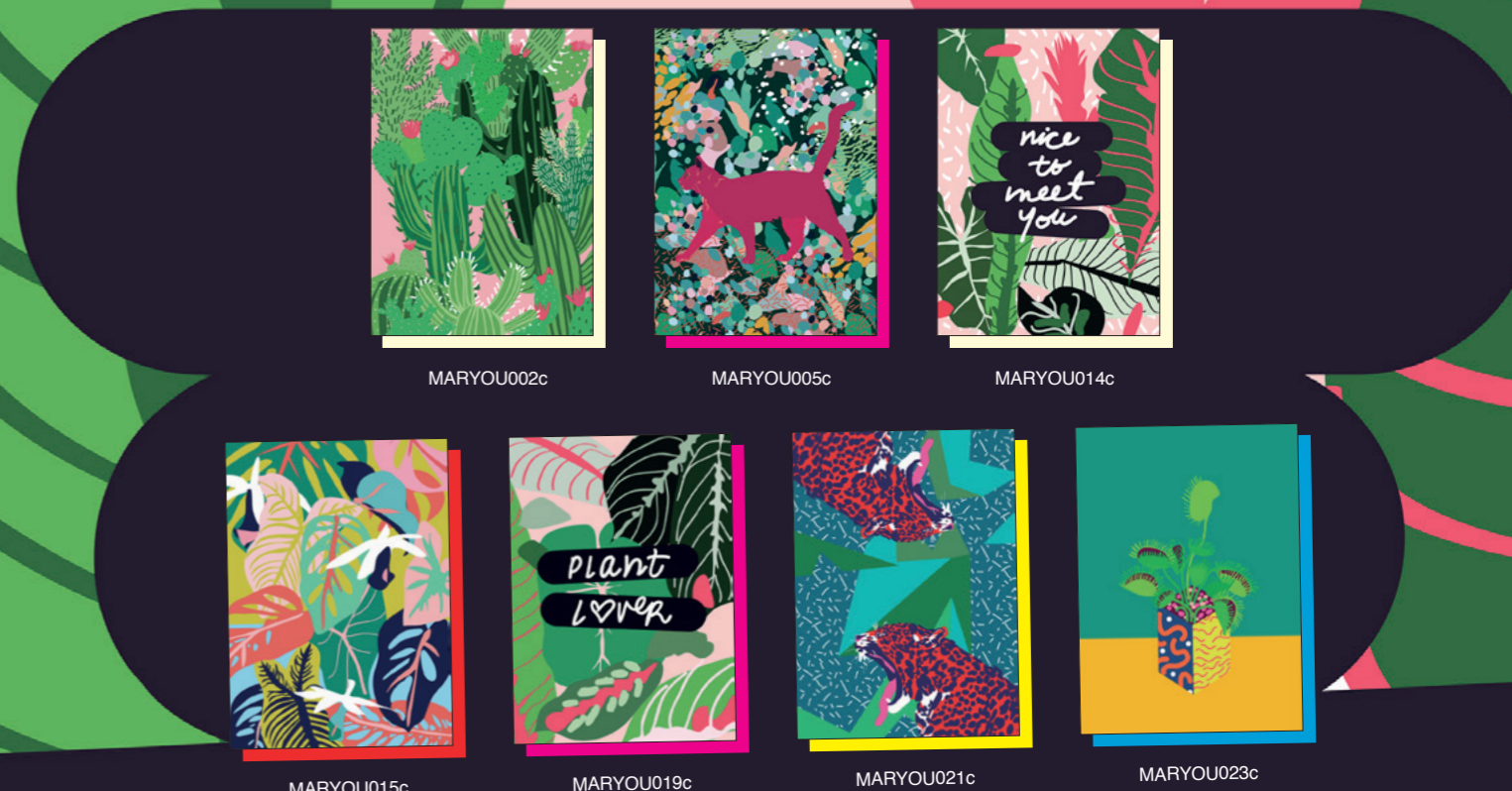
## ALICE BELVOIR

Alice Belvoir is an illustrator currently based in London, UK. Alice uses human behaviour and day to day life as inspiration for her practice, and enjoys illustrating different characters in a variety of scenarios. She enjoys capturing snapshots of life in colourful, detailed illustrations. Alice often uses humour to make some seemingly mundane scenarios more interesting, fun and relatable. Alice also creates zines and comics that depict a range of subject matter, from mental health issues, to the effects of technology on our daily lives.



# MARIERY YOUNG

PAPER STOCK INVERCOTE 300GSM



MARYOU002c

MARYOU005c

MARYOU014c

MARYOU015c

MARYOU019c

MARYOU021c

MARYOU023c



## MARIERY YOUNG

Mariery Young is an illustrator with a background in architecture. Her work focuses on colour and shape, turning her obsessions into illustrated patterns. She is heavily influenced by her roots, from the rich biodiversity found in the jungles of Panama to her Chinese heritage.



MARYOU024c

MARYOU026c

MARYOU027c



WACKA DESIGNS

WACKA DESIGNS



PAPER STOCK  
INVERCOTE  
300GSM

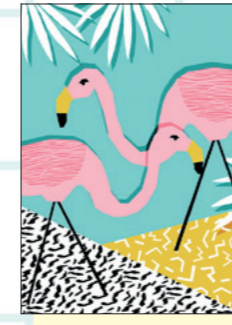
WACKA DESIGNS  
Visually creating chilled out  
tropical vibes since 2015.



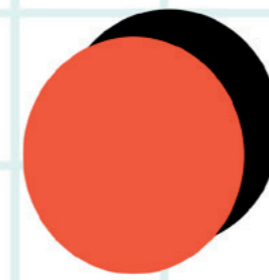
WACKA007c



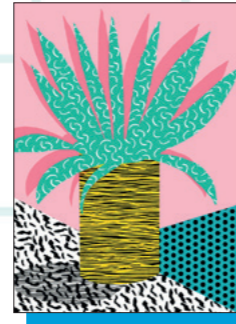
WACKA021c



WACKA017c



WACKA031c



WACKA006c



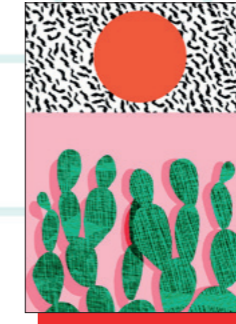
WACKA001c



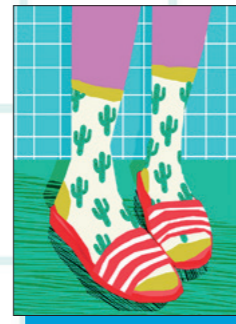
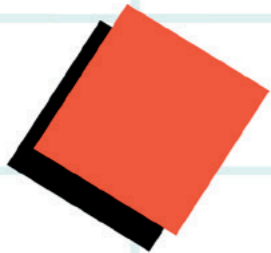
WACKA016c



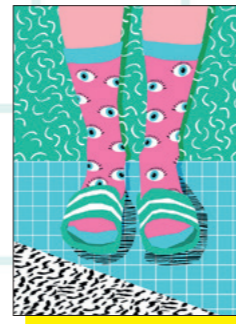
WACKA015c



WACKA012c



WACKA025c



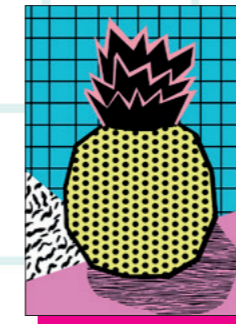
WACKA027c



WACKA024c



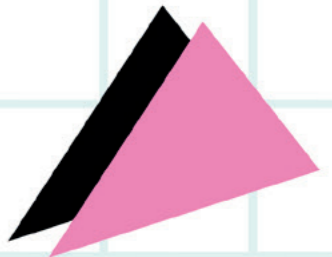
WACKA002c



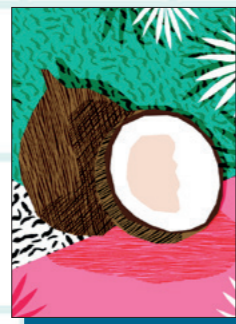
WACKA020c



WACKA034c



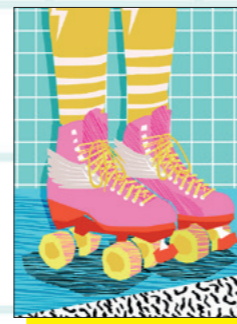
WACKA019c



WACKA039c



WACKA046c



WACKA049c



WACKA054c



WACKA055c





# DIETER BRAUN



DIEBRAU014c



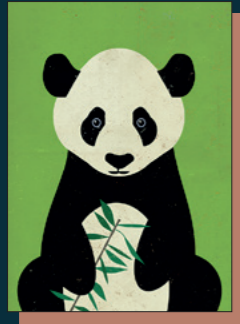
DIEBRAU057c



DIEBRAU058c



DIEBRAU029c



DIEBRAU039c



DIEBRAU033c



DIEBRAU003c

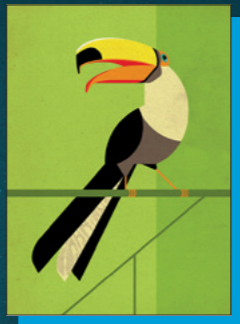


DIEBRAU038c



## DIETER BRAUN

Looking at a picture that I love makes me happy. It would be half the battle won if I could make people happy when they look at one of my pictures.



DIEBRAU008c



DIEBRAU060c



DIEBRAU061c



DIEBRAU063c

PAPER STOCK  
INVERCOTE  
300GSM

# THE NATIVE STATE

PAPER STOCK  
INVERCOTE  
300GSM



NATISTA031c



NATISTA002c



NATISTA079c



NATISTA084c



NATISTA082c



NATISTA025c



NATISTA080c



NATISTA081c



NATISTA078c



NATISTA005c



NATISTA070c



NATISTA083c

## THE NATIVE STATE

Founded by Scottish based designer Frankie Kerr-Dineen, The Native State opened its virtual doors in the summer of 2012. Inspired by adventure, love and positive vibes, their line of prints and stationery aim to lift your mood, make you smile or get you back on the right path. The TNS Manifesto sums them up pretty well - 'We are the drifters and dancers, sun worshippers and risk takers. The dreamers, the lovers, believers and change makers.'



# HANNA MELIN

PAPER STOCK  
INVERCOTE  
300GSM



HANMEL015c



HANMEL018c



HANMEL026c



HANMEL027c



HANMEL031c



HANMEL035c



HANMEL036c



## HANNA MELIN

Hanna Melin fell in love with drawing at an early age; a passion that took her to England to study at London's Royal Academy of Arts where she earned a master's degree in visual communication.

# BIANCA GREEN

PAPER STOCK  
INVERCOTE  
300GSM



BIAGRE008c



BIAGRE018c



BIAGRE017c



BIAGRE016c

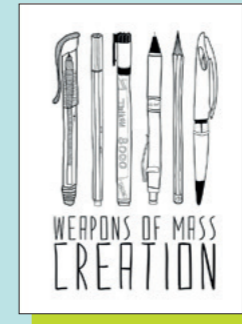


## BIANCA GREEN

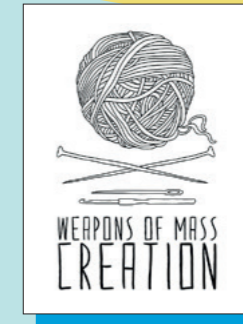
Bianca Green is an artist, dreamer and colour addict. The German-Brazilian- American was born in Rio in 1982 and is currently living and working in Germany. In Berlin she is constantly inspired by the ever changing and breathing skin of this rich and culturally diverse city. Creativity is her everyday life and it helps her to become the truest version of herself, and therefore the happiest.



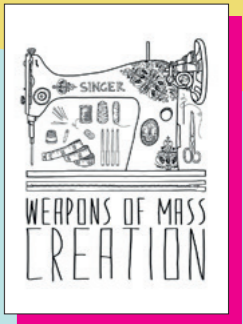
BIAGRE019c



BIAGRE014c



BIAGRE025c



BIAGRE026c



BIAGRE004c



BIAGRE003c



BIAGRE012c



BIAGRE013c



## LAND OF LOST CONTENT



VBH126c



VBH127c



VBH129c



VBH131c



VBH132c



VBH023c



VINHEM115c



### LAND OF LOST CONTENT

Wayne Hemingway and his team have hand picked the finest typographic art from their Land of Lost Content archive. "We have been collecting interesting design 'stuff' for over 30 years. The history of typography in the UK is a rich and often well documented but most of these prints have never been published before, so enjoy a bit of rare design history."

## JAYSON LILLEY



JAYLIL014c



JAYLIL015c



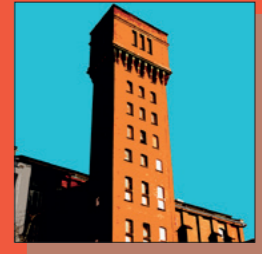
JAYLIL003c



JAYLIL009c



JAYLIL007c



JAYLIL016c



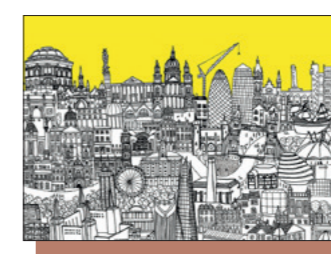
### JAYSON LILLEY

From iconic London landmarks like Borough Market and Battersea Power Station, to everyday subject matters like buses and English breakfasts, Jayson Lilley's art makes the ordinary look extraordinary. With his signature bold colours, limited palette and illustrative approach, Lilley's graphic novel style certainly packs a punch.

## LIZZIE PRESTT



LIZPRE002c



LIZPRE004c



LIZPRE001c



### LIZZIE PRESTT

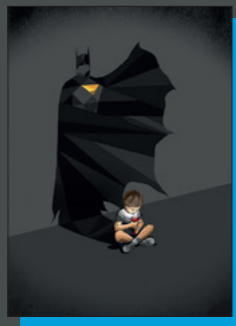
Lizzie Prestt is a freelance illustrator living in London. In her contemporary, signature style she captures cityscapes and general everyday life observations from her unique perspective.



PAPER STOCK  
INVERCOTE  
300GSM



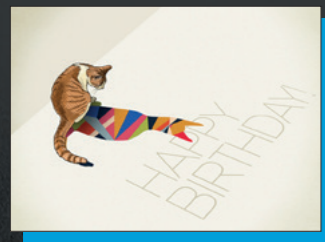
JASRAT012c



JASRAT013c



JASRAT024c



JASRAT002c



JASRAT019c



**JASON RATLIFF**

I would consider myself a creator of a whimsical, if not overly aspirational world. My particular artistic voice is a marriage of my design and fine art backgrounds - a traditional illustration style mixed with a design-influenced colour palette and composition.

PAPER STOCK  
INVERCOTE  
300GSM



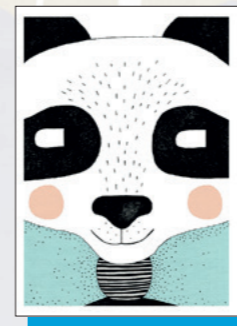
SEVTHR020c



SEVTHR018c



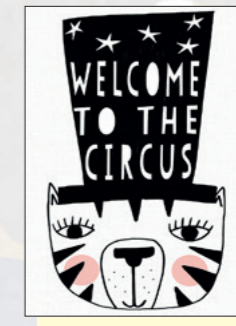
SEVTHR016c



SEVTHR006c



SEVTHR005c



SEVTHR011c



SEVTHR012c



SEVTHR100c



SEVTHR019c

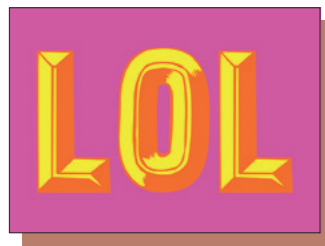


**SEVENTY TREE**

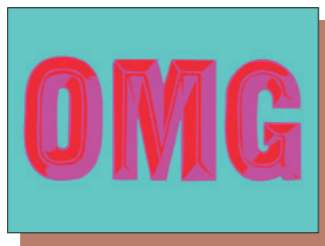
Seventy Tree was established in 2010 by UK illustrator Kerry Layton. Kerry lives and works in Devon with her husband and three children. Her love for geometrics, characterful creatures and colour is strongly represented in her work. She creates whimsical imagery that appeals to both adults and children alike.



## EPP DESIGN



EEPDESIGN013c



EEPDESIGN022c



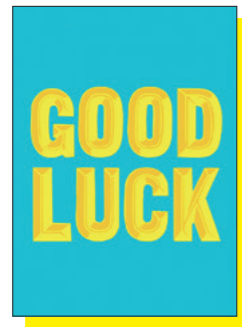
EEPDESIGN023c



EEPDESIGN014c



EEPDESIGN027c



EEPDESIGN026c



EEPDESIGN025c



EEPDESIGN024c



### EPP DESIGN

Creative design and illustration. A mix of handdrawn and digital artworks created with passion. East End Prints supports emerging artists and illustrators onto print.

## REBECCA KAYE



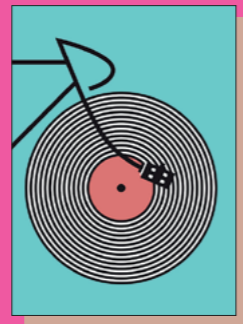
REBKAY003c



REBKAY005c



REBKAY006c



REBKAY008c



**REBECCA KAYE**  
Image maker based in Edinburgh. Inspired by the great outdoors and all things bike.



## CONI DELLA VEDOVA



CONILAB001c



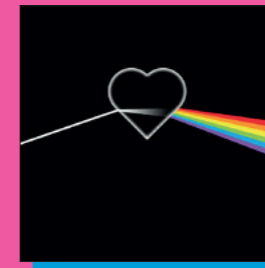
CONILAB002c



**CONI DELLA VEDOVA**  
Coni Della Vedova is an independent graphic designer based in Barcelona. In 2011 she created conilab, her laboratory where she designs her own poster series and prints in handmade silkscreen. She loves language and typography, old etchings, signs, symbols and icons! In her artwork you will find a little bit of all these things.



## THOMAS FUCHS



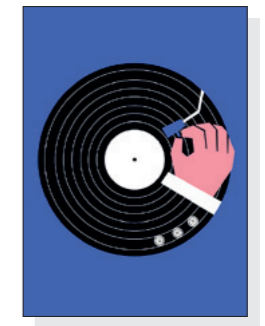
THOMFU002c



### THOMAS FUCHS

Thomas Fuchs is an award-winning illustrator and graphic designer. Known for his astute ideas and concept-driven work, his illustrations have appeared in most publications in the US and Germany. Apart from his commercial work, he regularly creates image series as visual commentaries in response to political or societal tendencies.

## DALE EDWIN MURRAY



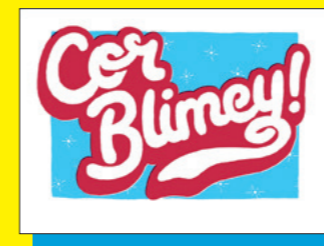
DALMUR029c



### DALE EDWIN MURRAY

A constant doodler, sketcher and scribbler searching for the perfect print. Dale lives and works in the UK.

## QUIET BRITISH ACCENT



QBA001c



QBA002c



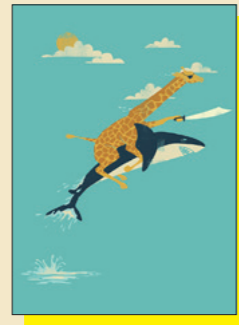
**QUIET BRITISH ACCENT**  
Quiet British Accent is Jason and Sharon. We began working as a duo in 2011 and mix lettering, textiles, paint and print with language and pop culture. We exhibit regularly and produce artwork, editions, clothing and any other gubbins that take our fancy.



# JAY FLECK



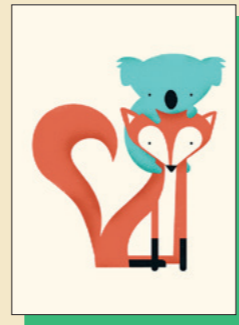
JFLECK021c



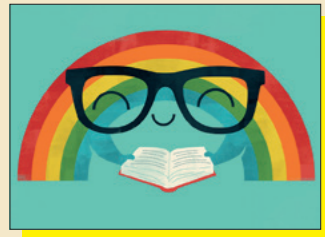
JFLECK006c



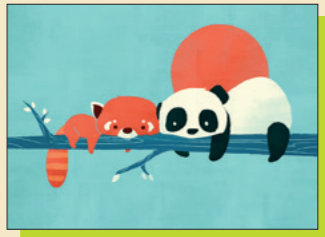
JFLECK018c



JFLECK009c



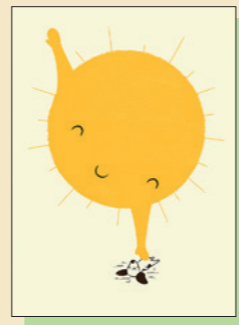
JFLECK013c



JFLECK022c



JFLECK023c



JFLECK027c



## JAY FLECK

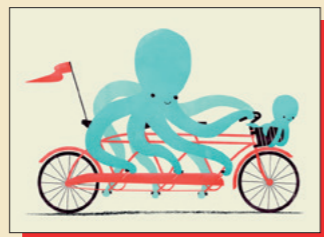
Jay Fleck is a Shorewood, Illinois based designer and illustrator. His artwork is bold and imaginative, featuring whimsical animal pairings, images of faraway lands and fantasy playgrounds, or just beautiful compositions of colour and shape. He is inspired by his childhood along with his experiences with his two young children.



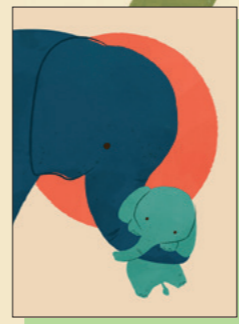
JFLECK024c



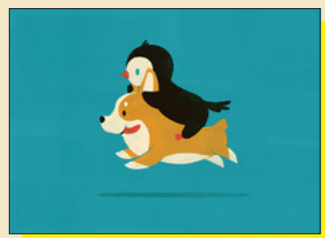
JFLECK025c



JFLECK017c



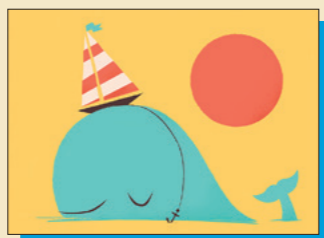
JFLECK030c



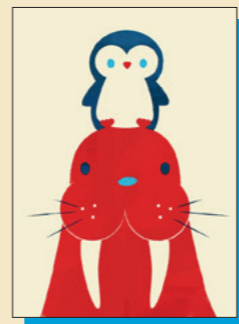
JFLECK032c



JFLECK033c



JFLECK034c



JFLECK035c

# TRACIE ANDREWS



## TRACIE ANDREWS

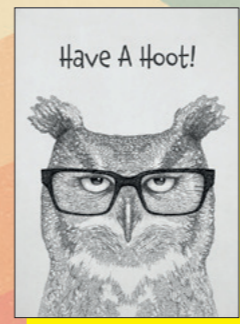
Tracie Andrews is a freelance graphic artist and illustrator living and working in the UK. She originally studied Fine Art at university but now her work branches out into more varied modern methods of working and experimentation. Her style and subject matter is very diverse and is influenced by the world around her.



TRANDR003c



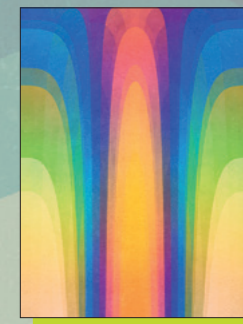
TRANDR002c



TRANDR022c



TRANDR005c



TRANDR020c



TRANDR036c



TRANDR049c



TRANDR050c

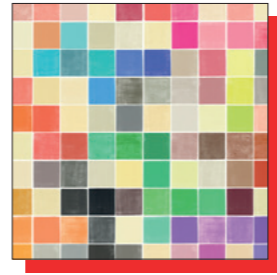




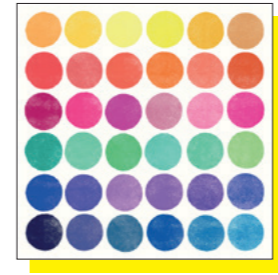
GARIMA055c



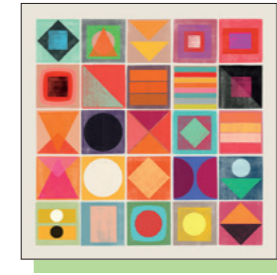
GARIMA044c



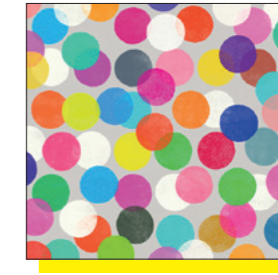
GARIMA015c



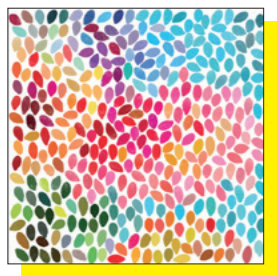
GARIMA002c



GARIMA067c



GARIMA068c



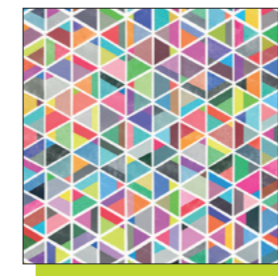
GARIMA008c



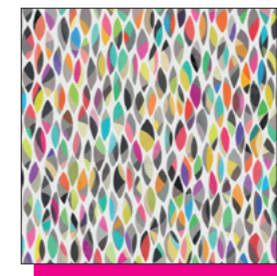
GARIMA022c



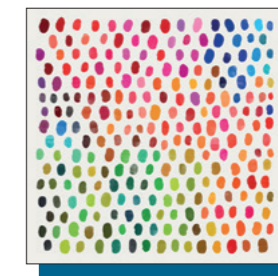
GARIMA016c



GARIMA066c



GARIMA069c



GARIMA070c



GARIMA029c



GARIMA004c



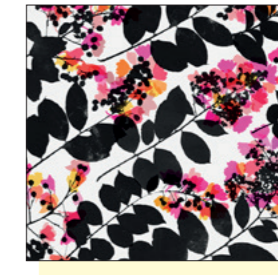
GARIMA057c



GARIMA028c



GARIMA075c



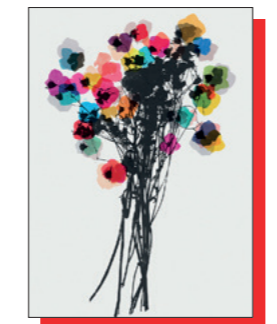
GARIMA076c



GARIMA024c



GARIMA037c



GARIMA056c



**GARIMA DHAWAN**

Garima Dhawan is an Indian Artist, living and working in New York, and an alumni of RISD (Rhode Island School of Design). Her exploration begins with collage and hand printed forms, inspired by music, nature, poetry, literature and spiritual teachings. These ideas then become the starting point of her art and textiles.



GARIMA021c



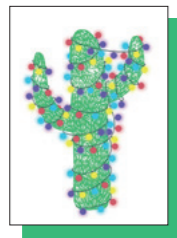
GARIMA031c

PAPER STOCK  
INVERCOTE  
300GSM



# OCCASIONS

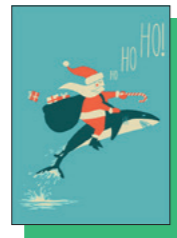
## CHRISTMAS



BIAGRE028c  
Bianca Green



INDPRI084c  
Indie Prints



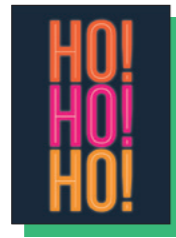
JFLECK026c  
Jay Fleck



NATISTA091c  
Native State



NATISTA088c  
Native State



NATISTA090c  
Native State



HANMEL033c  
Hanna Melin



HANMEL034c  
Hanna Melin

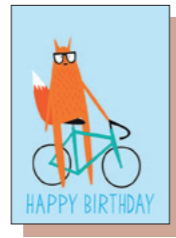
## BIRTHDAY



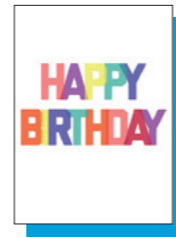
CONILAB001c  
Coni Della Vedova



EEPDESIGN027c  
EEP Design



REBKAY005c  
Rebecca Kaye



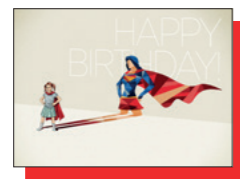
NATISTA078c  
Native State



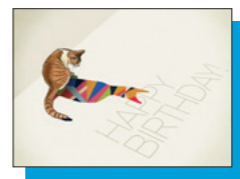
TRANDR022c  
Tracie Andrews



JASRAT012c  
Jason Ratliff



JASRAT024c  
Jason Ratliff

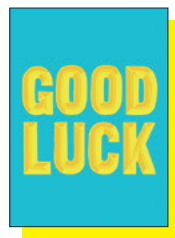


JASRAT002c  
Jason Ratliff



JASRAT019c  
Jason Ratliff

## GOOD LUCK



EEPDESIGN026c  
EEP Design



NATISTA082c  
Native State



EEPDESIGN024c  
EEP Design



NATISTA081c  
Native State



SEVTHR011c  
Seventy Tree



SEVTHR012c  
Seventy Tree

# SUPERMUNDANE

PAPER STOCK  
CALLISTO PEARL  
300GSM



SUPMUN001c



SUPMUN002c



SUPMUN003c



SUPMUN004c



SUPMUN005c



SUPMUN006c



SUPMUN007c



SUPMUN008c



## SUPERMUNDANE

Rob Lowe, A.K.A Supermundane, is an artist, graphic designer, typographer, illustrator.

His practice is defined by a distinctive use of colour, line and simplicity which can be seen through all his different disciplines from typeface design to his personal works. His signature geometric artwork has been published and exhibited worldwide.

He has been responsible for designing some of the most groundbreaking independent magazines of the last decade including the alternative children's magazine Anorak and the award-winning food quarterly Fire & Knives. He lives and works in London.

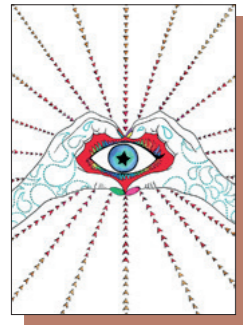


# ZAKEE SHARIFF

PAPER STOCK  
CALLISTO  
PEARL  
300GSM

## ZAKEE SHARIFF

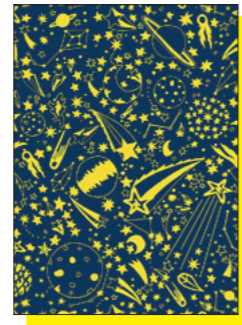
Zakee has been an artist for as long as she can remember. Her creative practice and brand, Zakee Shariff was founded in 1997. For her coexisting as an artist and designer is a necessity. Her work is inspired by her spirituality, travel, healing, music and street culture. She is interested in creating an emotional response and translating experience. Her wish is to empower, heal, and touch peoples hearts.



ZAKSHE001c



ZAKSHE002c



ZAKSHE003c



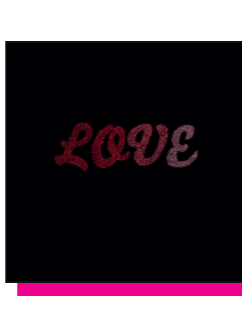
ZAKSHE004c



ZAKSHE005c



ZAKSHE006c



ZAKSHE007c



ZAKSHE008c



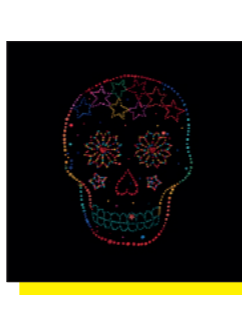
ZAKSHE009c



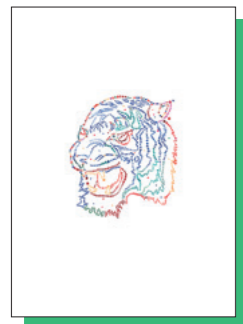
ZAKSHE010c



ZAKSHE011c



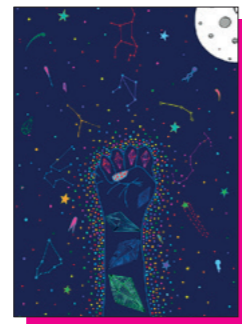
ZAKSHE012c



ZAKSHE013c



ZAKSHE014c



ZAKSHE015c



ZAKSHE016c

# IAN STEVENSON

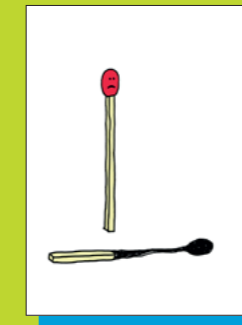
PAPER STOCK  
CALLISTO  
PEARL  
300GSM

## IAN STEVENSON

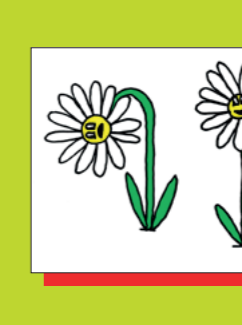
Ian Stevenson is a UFO in the art world and he loves to draw. Fostering a signature style of weightless irony he welcomes you to join him on a visual adventure.



IANSTE001c



IANSTE002c



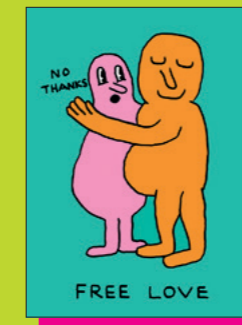
IANSTE003c



IANSTE004c



IANSTE005c



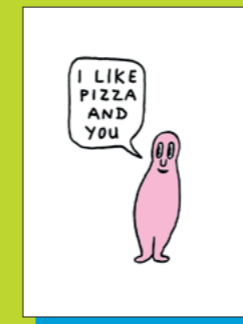
IANSTE006c



IANSTE007c



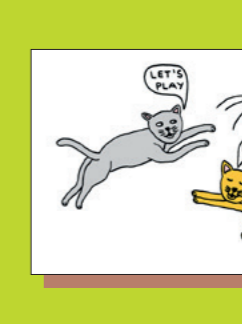
IANSTE008c



IANSTE009c



IANSTE010c



IANSTE011c



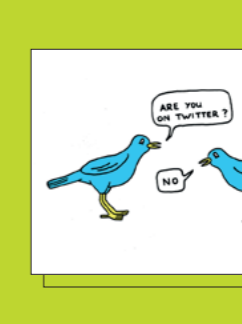
IANSTE012c



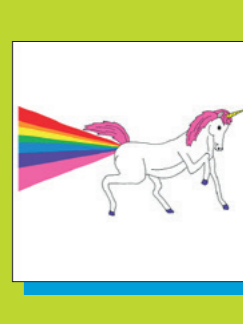
IANSTE014c



IANSTE015c



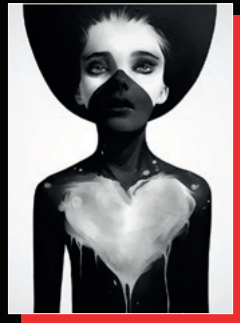
IANSTE016c



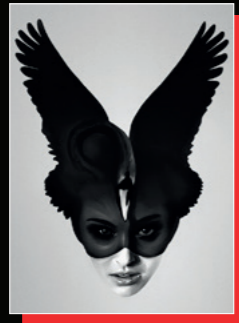
IANSTE017c



# RUBEN IRELAND



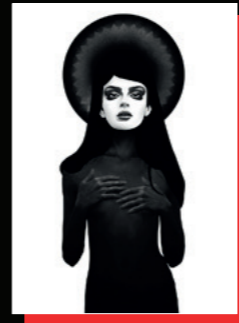
RUBIRE001c



RUBIRE002c



RUBIRE003c



RUBIRE004c



RUBIRE005c



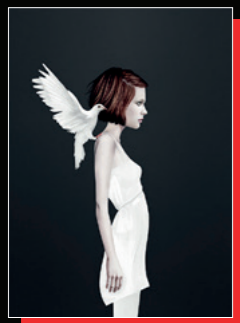
RUBIRE006c



RUBIRE007c



RUBIRE008c



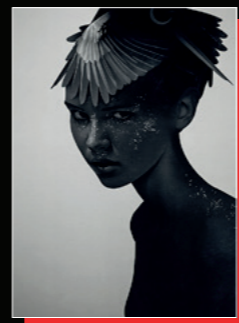
RUBIRE009c



RUBIRE010c



RUBIRE011c



RUBIRE012c



## RUBEN IRELAND

Ruben Ireland is a graphic artist and illustrator based in the UK. Ireland's work often features solitary women, quietly imposing animals and minimalistic environments, conveying a sense of inner peace, curiosity and understanding whilst exploring a range of subjects surrounding life, death, love, loss, fear and serenity. His tools include ink, acrylic, weathered papers, photography and a Wacom tablet.

# DAVID BRAY

PAPER STOCK CALLISTO PEARL 300GSM



DAVBRA001c



DAVBRA002c



DAVBRA003c



DAVBRA004c



## DAVID BRAY

David Bray is an illustrator/artist based in South London. He has been working as a freelance illustrator since his graduation from Central St. Martins in 1992. His preferred medium is pen/pencil on paper but is always up for experimenting with new mark making techniques. As an artist, David has exhibited his beautiful artworks extensively in Europe and Internationally.



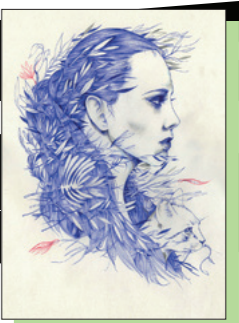
DAVBRA005c



DAVBRA006c



DAVBRA007c



DAVBRA008c

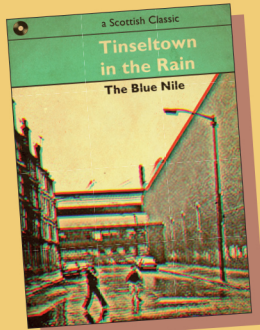


# INDIE PRINTS

# NEW RANGE 2018



INDPRI026c



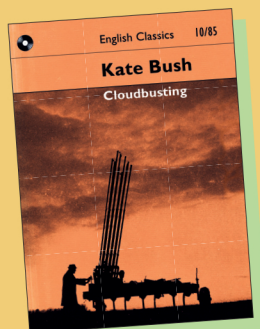
INDPRI077c



INDPRI107c



INDPRI109c



INDPRI114c



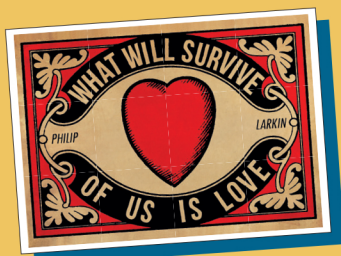
INDPRI115c



INDPRI122c



INDPRI124c



INDPRI126c



INDPRI119c



## INDIE PRINTS

Indie Prints is a London based artist with a clear passion for his surroundings and culture. Influenced by retro rock posters, typography and wall art, his work has an amazing vintage feel to it. He combines individual band's styles with typography, and creates stunning visuals for songs and their perceived meaning.



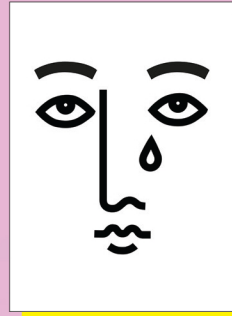
# HONEYMOON HOTEL

I SAID A HIP HOP  
THE HIPPIE THE  
HIPPIE TO THE HIP  
HIP-HOP AND YOU  
DON'T STOP THE  
ROCK IT TO THE  
BANG BANG BOOGIE  
SAY UP JUMP THE  
BOOGIE TO THE  
RHYTHM OF THE  
BOOGIE THE BEAT.

HONHOT009c



HONHOT022c



HONHOT023c

*She's  
Electric.*

HONHOT025c



HONHOT032c



HONHOT033c



HONHOT034c



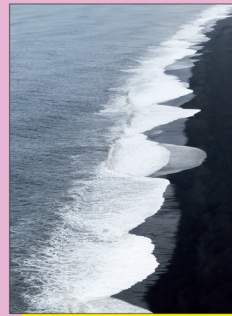
HONHOT041c



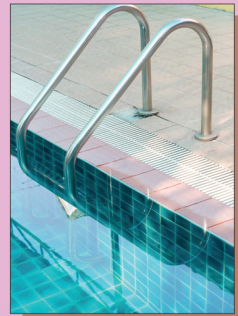
HONHOT042c



HONHOT052c



HONHOT059c



HONHOT060c



## HONEYMOON HOTEL

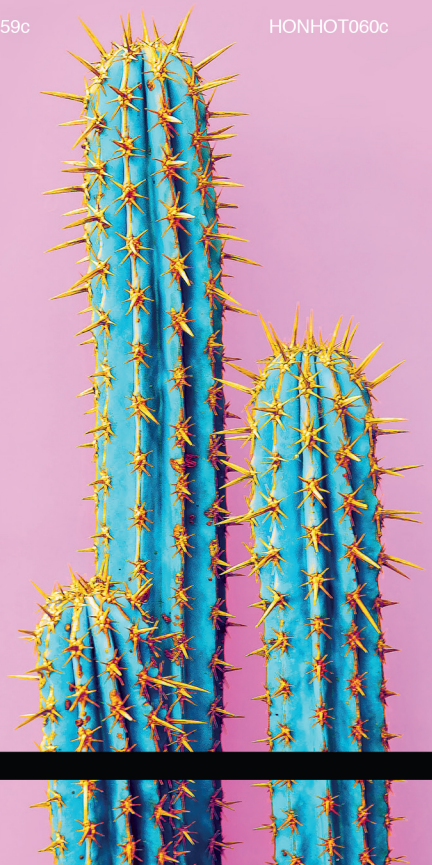
Honeymoon Hotel is a creative hub blending poetry and design, romance and art, quotes and fashion. Chic, contemporary, considered, thoughtful. Art to set your soul alight.



HONHOT061c



HONHOT063c





# ANDY BRIDGE



ANDBRI022c



ANDBRI023c



ANDBRI024c



ANDBRI025c



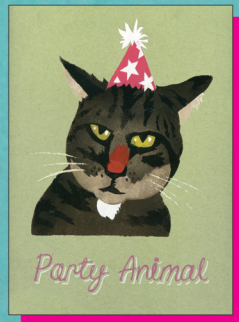
ANDBRI026c



ANDBRI027c



ANDBRI028c



ANDBRI029c



ANDBRI030c



## ANDY BRIDGE

Andy Bridge lives and works in France. He paints onto wood or metal with household emulsion and prints using stencils, often scratching into the surface of the paint, scraping away layers, removing the newness of the image and revealing traces of paint beneath. His work is textured, painterly and fun!



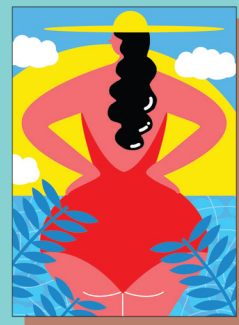
# ANA JAKS



ANAJAK001c



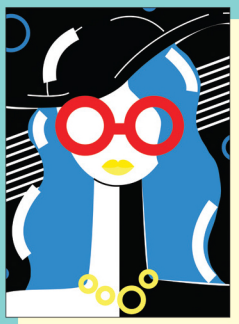
ANAJAK002c



ANAJAK003c



ANAJAK004c



ANAJAK005c



ANAJAK006c



ANAJAK007c



ANAJAK008c



ANAJAK009c



ANAJAK010c



ANAJAK011c



ANAJAK012c



## ANA JAKS

Ana Jaks is a freelance illustrator currently based in Bristol. She creates bright illustrations with lots of shape, colour, pattern, usually centred around women and feminist themes.



# HENRY RIVERS



HENRIV001c



HENRIV002c



HENRIV004c



HENRIV005c



HENRIV007c



HENRIV008c



HENRIV009c



HENRIV011c



HENRIV012c



HENRIV013c



HENRIV014c

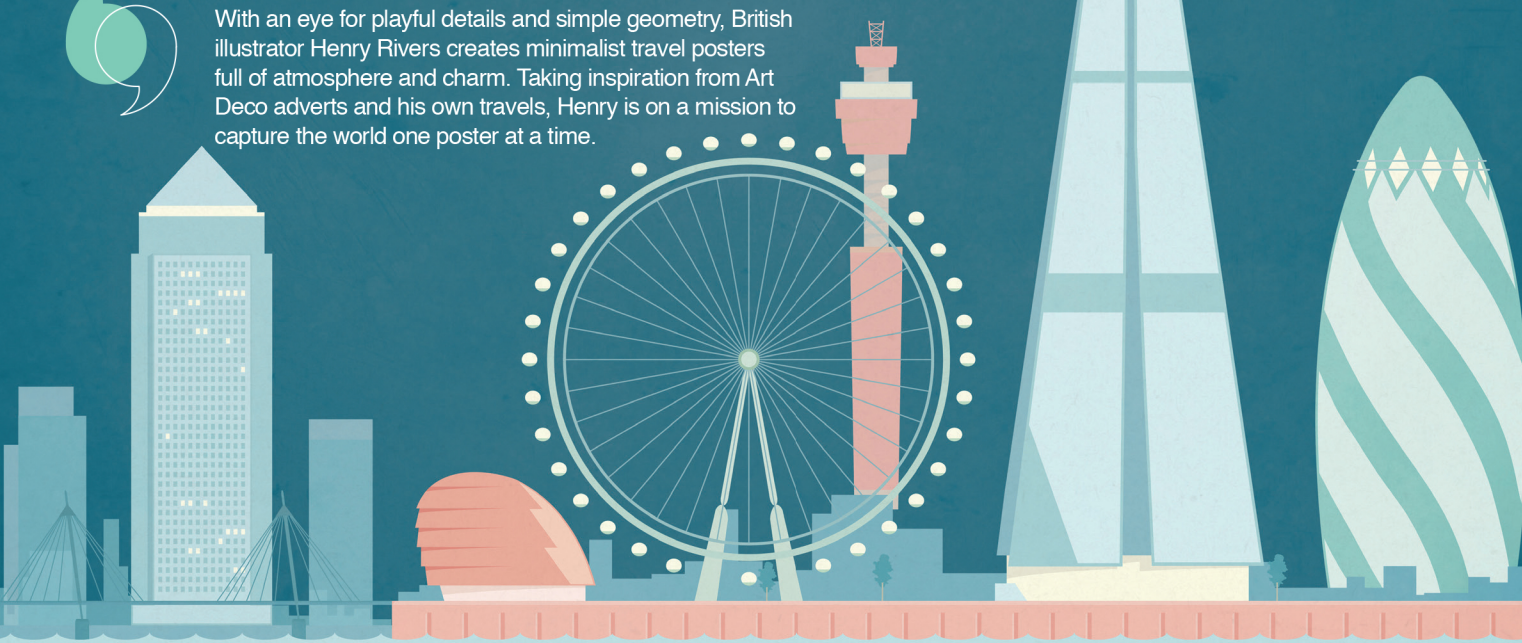


HENRIV019c



## HENRY RIVERS

With an eye for playful details and simple geometry, British illustrator Henry Rivers creates minimalist travel posters full of atmosphere and charm. Taking inspiration from Art Deco adverts and his own travels, Henry is on a mission to capture the world one poster at a time.





# SEASON OF VICTORY



SEAVIC014c



SEAVIC015c



SEAVIC016c



SEAVIC017c



SEAVIC018c



SEAVIC019c



SEAVIC020c



SEAVIC021c



SEAVIC022c



SEAVIC023c



SEAVIC024c



SEAVIC025c



SEAVIC026c



## SEASON OF VICTORY

Based in London, as Season of Victory I create designs exploring my love of colour, pattern, packaging and type. I'm currently creating social media content for global brands and also collaborating on a freelance basis.



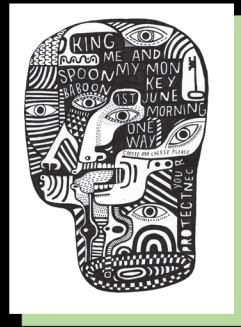
# DAVID SHILLINGLAW



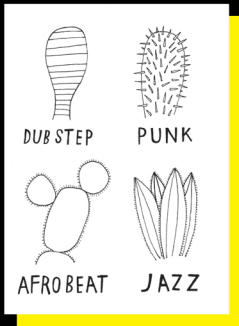
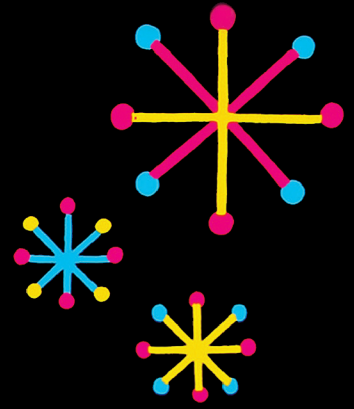
DAVSHI001c



DAVSHI002c



DAVSHI003c



DAVSHI004c



DAVSHI005c



DAVSHI006c



DAVSHI007c



## DAVID SHILLINGLAW

David Shillinglaw is an artist whose work includes a variety of disciplines, ranging from small drawings and hand made books, paintings on canvas, and large scale wall murals and installation. David has also worked as an illustrator and designer for a range of clients. Since graduating from Central Saint Martins in 2002 he has exhibited his artwork in galleries internationally. He has also engaged in a number of community projects and artist residencies.



DAVSHI008c



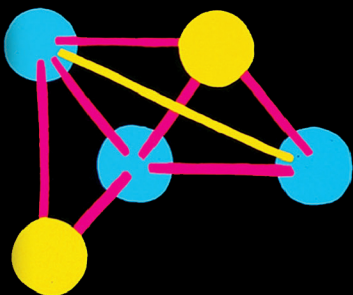
DAVSHI009c



DAVSHI010c



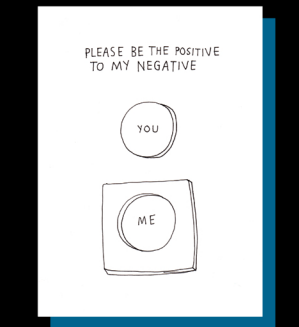
DAVSHI011c



DAVSHI012c



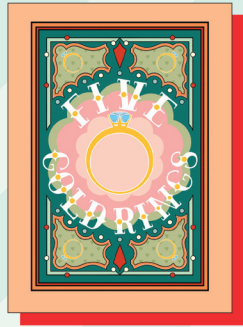
DAVSHI013c



DAVSHI014c



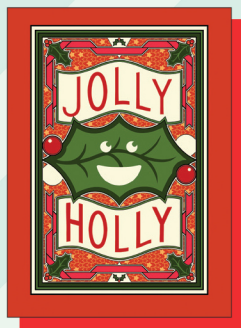
# REBECCA STRICKSON



REBSTR010c



REBSTR011c



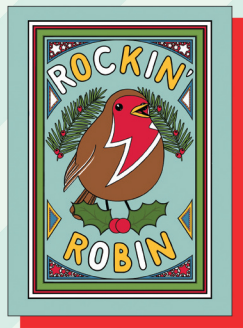
REBSTR012c



REBSTR013c



REBSTR014c



REBSTR015c

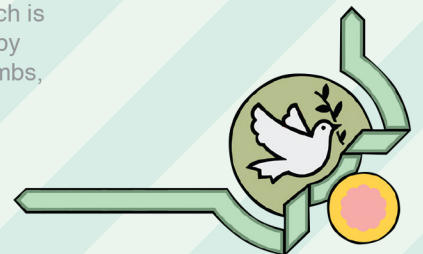


REBSTR016c

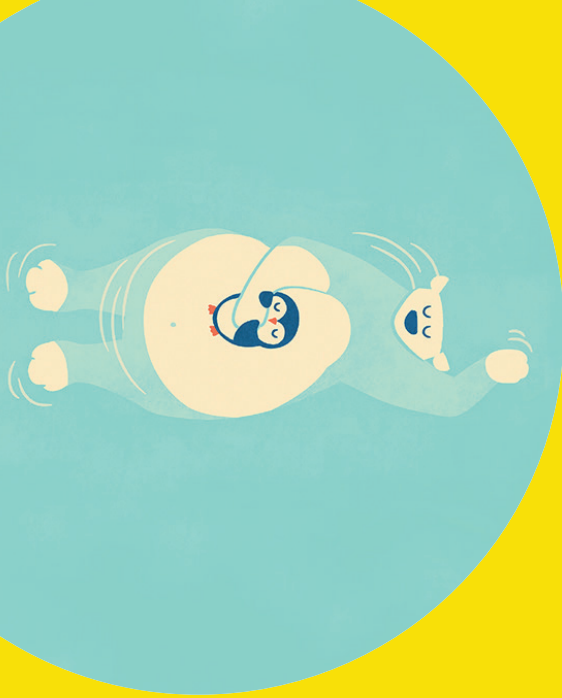


## REBECCA STRICKSON

Rebecca Strickson is a Peckham based Illustrator and do-er of things. Growing up in Lincolnshire, she then studied at Goldsmiths College before going freelance in 2009. Working solo and also with RSA Films, she has gained many clients with her bright, bold, energetic and forceful artwork which is all the better for her to get the point across. Influenced by nature, pattern, traditional crafts and weirdly atomic bombs, Rebecca's work is fun and fierce, strong and splendid.







www.eastendprints.co.uk  
info@eastendprints.co.uk  
07985 440385 / 0207 241 1118

EAST END PRINTS Shop  
234 Brick Lane  
E2 7EB